

Listed Investment Companies

June 2011 NTAs

Update | 18 July 2011

Listed Investment Companies | Australia

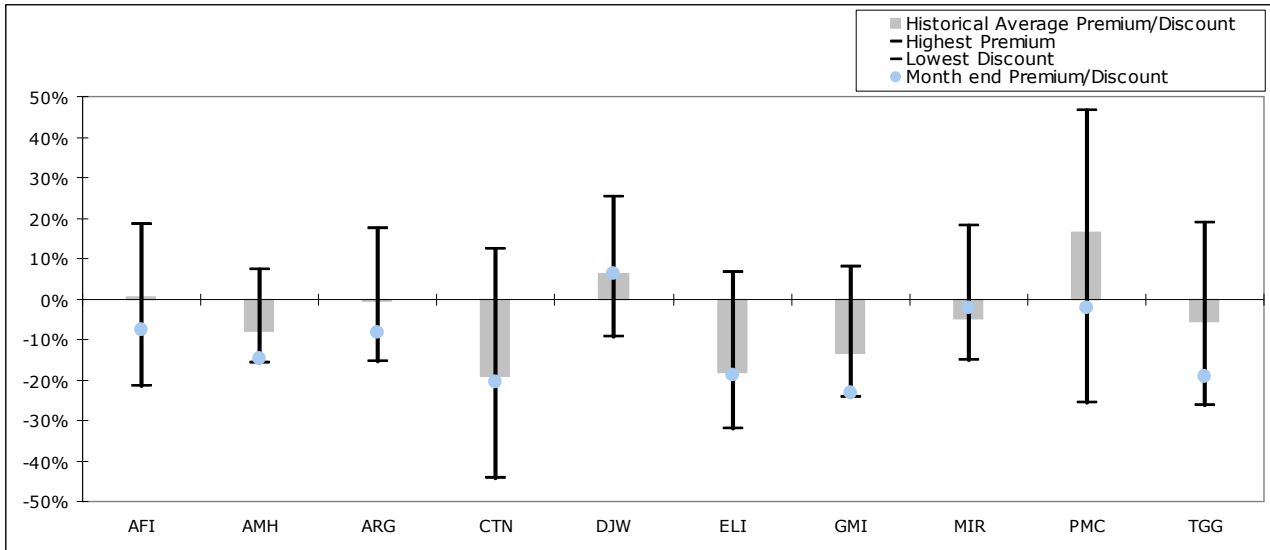
Analyst: James Martin
+61 3 9924 0274
james.martin@jbwere.com

- The S&P/ASX Index finished the month lower with a 2.1% fall during June following negative overseas sentiment. Concerns initially started in the US after an unemployment reading on private-sector job growth came in well below expectations, fuelling anxiety that the world's largest economy will continue to remain stagnant. Uncertainty around the fate of Greece dominated headlines and put downward pressure on equity markets. However, the Greek governments move to approve austerity measures late in the month appeased global market jitters.
- The end of June marks the completion of the 2011 financial year and reporting season has begun. So far both CTN and MIR have reported their full year results. Both reported strong underlying portfolio performance during the past financial year and improvements in profitability.
- The divergence in share price movements and underlying portfolio performance continued in June, with large discounts to NTA emerging. Virtually all of the LICs we cover were trading at discounts at the end of June, with the exception of DJW. These discounts have widened during the weaker equity market conditions, which is at odds with LICs perceived defensive characteristics. This divergence is likely a result of investors reducing their equity market exposure in an uncertain global macroeconomic environment. On a valuation basis, a number of the LICs do represent good value at these levels.
- Premiums and discounts to closing prices and performance data are summarised as per below:

Company Name	15-Jul-11 Price cps	30-Jun-11 Price cps	30-Jun-11 NTA before provision for tax on unrealised gains cps	30-Jun-11 NTA after provision for tax on unrealised gains cps	30-Jun-11 NTA Prem/(Dis) Before provision for tax on unrealised gains	30-Jun-11 NTA Prem/(Dis) After provision for tax on unrealised gains	3 year average Premium (Discount) Before provision for tax
Active Strategies							
Australian Equity Portfolios							
AFI AFIC	440	442	479	416	-7.7%	6.3%	3.8%
ALF Australian Leaders Fund Limited *	126	127	142	140	-10.6%	-9.3%	**
ALR Aberdeen Leaders Limited *	117	119	124	122	-4.0%	-2.5%	-2.7%
AMH AMCIL Limited	67	67	78	75	-14.7%	-11.3%	-10.2%
AOD Aurora Sandringham Dividend Income Fund *	92	95	101	NA	-6.2%	NA	0.3%
ARG Argo Investments	556	561	611	555	-8.2%	1.1%	3.6%
AUI Australian United *	631	649	724	636	-10.4%	2.0%	-4.0%
BKI Brickworks Investment Company *	120	121	142	134	-14.8%	-9.7%	-11.9%
CTN Contango MicroCap Limited	119	119	150	141	-20.6%	-15.7%	-29.6%
CYA Century Australian Investments *	67	69	92	93	-25.5%	-26.4%	-14.4%
DJW Djerrivarrh Investments Limited	386	382	359	351	6.4%	8.8%	12.7%
DUI Diversified United Investments *	267	271	308	276	-12.0%	-1.8%	-4.9%
ELI Emerging Leaders Investments Limited	90	87	107	107	-18.7%	-18.7%	-20.8%
IBC Ironbark Capital Limited (BTE) *	48	48	57	56	-16.1%	-15.2%	**
LRF LinQ Resources Fund *	84	85	129	NA	-34.5%	NA	**
MIR Mirrabooka Investments Limited	187	186	190	176	-2.1%	5.7%	-0.6%
MLT Milton Corporation *	1522	1560	1736	1611	-10.1%	-3.2%	-2.5%
WAM WAM Capital Limited *	156	156	168	163	-7.5%	-4.4%	-20.4%
WHF Whitefield Limited *	267	270	318	329	-15.1%	-17.9%	-8.7%
WAX WAM Research Limited*	70	71	87	93	-18.8%	-23.5%	**
International Equity Portfolios							
AGF AMP Capital China Growth Fund *	78	75	99	NA	-24.2%	NA	**
GMI Global Mining Investments Limited	117	114	148	141	-23.3%	-19.5%	-14.4%
PMC Platinum Capital Limited	116	116	119	119	-2.1%	-2.1%	7.8%
TGG Templeton Global Growth	76	76	94	94	-19.1%	-19.1%	-18.2%
XKO S&P/ASX 300 Index	4478	4608			-2.83%	% Change since end of month	

Source: JBWere, IRESS. * Not covered. ** 3 Year average not available

Current and historical NTA



Exchange traded funds

Company Name	15-Jul-11 Price cps	30-Jun-11 Price cps	15-Jul-11 NTA before provision for tax on unrealised gains cps	15-Jul-11 NTA after provision for tax on unrealised gains cps	15-Jul-11 NTA Premi/(Dis) Before provision for tax on unrealised gains	15-Jul-11 NTA Premi/(Dis) After provision for tax on unrealised gains	3 year average Premium (Discount) Before provision for tax
ETFs - Passive Strategies							
Australian Equity Portfolios							
SFY SPDR S&P/ASX 50 Fund	4304	4450	4302	4302	0.0%	0.0%	**
SLF SPDR S&P/ASX 200 Property Fund	750	775	748	748	0.3%	0.3%	**
STW SPDR S&P/ASX 200 Fund	4189	4317	4186	4186	0.1%	0.1%	**
VAS Vanguard Australian Shares Index	5759	5966	5769	5769	-0.2%	-0.2%	**
International Equity Portfolios							
IOO iShares S&P Global 100 #	5985	5977	5937	5937	0.8%	0.8%	**
IVV iShares S&P 500 #	12252	12244	12244	12244	0.1%	0.1%	**
IJH iShares S&P MidCap 400 #	9075	9090	9032	9032	0.5%	0.5%	**
IJR iShares S&P SmallCap 600 #	6825	6771	6811	6811	0.2%	0.2%	**
IVE iShares MSCI EAGG #	5430	5572	5441	5441	-0.2%	-0.2%	**
IEU iShares S&P Europe 350 #	3747	3877	3741	3741	0.1%	0.1%	**
IJP iShares MSCI Japan #	1000	963	988	988	1.2%	1.2%	**
IEM iShares MSCI Emerging Markets #	4355	4393	4356	4356	0.0%	0.0%	**
ITW iShares MSCI Taiwan #	1390	1391	1384	1384	0.4%	0.4%	**
IKO iShares MSCI South Korea #	6120	6004	6118	6118	0.0%	0.0%	**
IZZ iShares FTSE/Xinhua China 25 #	3862	3975	3857	3857	0.1%	0.1%	**
IHK iShares MSCI Hong Kong #	1687	1710	1691	1691	-0.2%	-0.2%	**
ISG iShares MSCI Singapore #	1286	1271	1282	1282	0.3%	0.3%	**
IAA iShares Asia 50 #	4305	4305	4297	4297	0.2%	0.2%	**
IBK iShares MSCI BRIC #	4337	4415	4349	4349	-0.3%	-0.3%	**
IRU iShares Russell 2000 #	7650	7614	7662	7662	-0.2%	-0.2%	**
IXP iShares Global Telecommunications #	5670	5690	5488	5488	3.3%	3.3%	**
IXJ iShares Global Healthcare #	5374	5410	5386	5386	-0.2%	-0.2%	**
IXI iShares Consumer Staples #	6160	6203	6165	6165	-0.1%	-0.1%	**
VEU Vanguard All-World ex-US Shares Index #	4531	4603	4506	4506	0.6%	0.6%	**
VTS Vanguard US Total Market Shares Index #	6371	6351	6321	6321	0.8%	0.8%	**

Source: JBWere, IRESS. ** 3 Year average not available

NTA as at 14 July 2011 - converted using AUD/USD exchange rate at 4.00pm London Time the previous day (Source: IRESS)

In relation to the International ETFs, please note that any premiums / discounts to NTA may arise as a result of the time period between the Australian and US share markets close.

Investment Performance as at 30 June 2011 (Based on NTA movements including dividends)

Australian Equity Portfolios

	1 Year	3 Years pa	5 Years pa	7 Years pa	10 Years pa	15 Years pa	20 Years pa
Australian Foundation Investment Company Ltd	11.5%	2.3%	4.2%	9.1%	8.6%	11.4%	11.7%
Aberdeen Leaders Limited *	5.0%	-2.5%	-0.5%	6.6%	3.8%	7.8%	-
AMCIL Limited	14.6%	7.2%	8.1%	10.3%	15.4%	-	-
Argo Investments	9.5%	1.3%	2.5%	8.0%	8.2%	10.9%	11.2%
Australian Leaders Fund Limited *	13.8%	14.9%	9.9%	12.1%	-	-	-
Australian United Limited *	12.4%	0.5%	2.8%	9.7%	8.4%	11.1%	-
Brickworks Investment Company *	12.6%	2.3%	4.4%	8.3%	-	-	-
Contango MicroCap Limited	34.0%	-1.2%	4.2%	10.4%	-	-	-
Century Australian Investments Limited *	11.5%	6.6%	2.3%	6.1%	-	-	-
Djerriwarrh Investments Limited	10.7%	1.4%	2.7%	7.6%	6.8%	8.8%	9.7%
Diversified United Investments Limited *	9.2%	-0.4%	2.3%	9.7%	7.7%	9.8%	-
Emerging Leaders Investments Limited	17.7%	1.2%	2.3%	-	-	-	-
Hunter Hall Global Value Limited *	3.9%	2.2%	-2.0%	3.1%	-	-	-
Ironbark Capital Limited *	10.3%	6.2%	2.2%	5.4%	3.1%	5.9%	6.7%
Mirrabooka Investments Limited	15.4%	4.6%	4.8%	9.9%	10.2%	-	-
Milton Corporation *	9.7%	1.7%	2.6%	7.4%	8.3%	12.3%	-
Spider S&P/ASX 50 Fund	10.7%	2.5%	2.6%	8.2%	-	-	-
Spider S&P/ASX 200 Property Fund	5.3%	-7.5%	-9.8%	-3.1%	-	-	-
Spider S&P/ASX 200 Fund	11.2%	0.0%	2.0%	8.0%	-	-	-
WAM Capital Limited *	14.5%	9.7%	4.9%	7.2%	9.0%	-	-
Whitefield Limited *	5.6%	1.5%	-2.9%	2.4%	-	-	-
WAM Research Limited*	13.4%	4.2%	-1.0%	1.7%	-	-	-
<i>S&P/ASX All Ordinaries Accumulation Index</i>	12.2%	-0.2%	2.6%	8.4%	7.4%	9.3%	9.8%
<i>S&P/ASX 50 Leaders Accumulation Index</i>	11.2%	1.1%	3.2%	8.5%	6.8%	9.7%	9.9%

International Equity Portfolios

	1 Year	3 Years pa	5 Years pa	7 Years pa	10 Years pa	15 Years pa	20 Years pa
AMP Capital China Growth Fund	9.7%	0.3%	-	-	-	-	-
Global Mining Investments Limited	16.8%	-7.1%	4.5%	9.2%	-	-	-
Platinum Capital Limited	-6.4%	6.0%	-0.9%	2.3%	4.7%	8.7%	-
Templeton Global Growth	3.3%	-3.5%	-5.7%	-1.6%	-2.7%	2.4%	4.3%
<i>MSCI World Accumulation Index</i>	3.2%	-2.7%	-4.6%	-0.5%	-3.1%	3.6%	5.7%

Share Price Performance as at 30 June 2011 (Based on Share Price movements including dividends)

Australian Equity Portfolios

	1 Year	3 Years pa	5 Years pa	7 Years pa	10 Years pa	15 Years pa	20 Years pa
Australian Foundation Investment Company Ltd	-2.3%	0.2%	3.1%	8.5%	7.2%	10.1%	9.0%
Aberdeen Leaders Limited *	1.0%	-3.8%	0.6%	8.1%	5.9%	9.5%	11.5%
AMCIL Limited	10.8%	3.5%	6.9%	9.3%	15.8%	-	-
Argo Investments Limited	0.1%	-3.4%	-0.3%	6.6%	8.8%	10.6%	10.1%
Australian Leaders Fund Limited *	30.9%	24.5%	13.2%	14.0%	-	-	-
Australian United Limited *	0.7%	-1.9%	1.4%	8.9%	8.7%	11.8%	11.6%
Brickworks Investment Company *	11.3%	5.1%	2.7%	7.8%	-	-	-
Contango MicroCap Limited	75.0%	4.8%	5.3%	10.6%	-	-	-
Century Australian Investments Limited *	3.3%	-3.1%	-1.4%	2.4%	-	-	-
Djerriwarrh Investments Limited	3.3%	2.7%	1.9%	7.2%	6.5%	8.3%	-
Diversified United Investments Limited *	-1.8%	-2.5%	0.2%	9.6%	7.9%	11.2%	-
Emerging Leaders Investments Limited	30.8%	2.3%	-0.9%	-	-	-	-
Hunter Hall Global Value Limited *	14.2%	1.3%	-1.9%	0.8%	-	-	-
Ironbark Capital Limited *	16.2%	6.2%	2.1%	4.8%	3.5%	5.3%	5.2%
Mirrabooka Investments Limited	16.1%	6.2%	4.3%	10.9%	11.5%	-	-
Milton Corporation *	2.2%	-2.3%	-0.4%	6.4%	7.6%	12.6%	12.7%
Spider S&P/ASX 50 Fund	11.0%	0.7%	2.5%	8.1%	-	-	-
Spider S&P/ASX 200 Property Fund	4.0%	-9.2%	-9.9%	-3.0%	-	-	-
Spider S&P/ASX 200 Fund	11.2%	0.2%	2.0%	8.1%	-	-	-
WAM Capital Limited *	41.9%	20.8%	6.8%	7.7%	11.7%	-	-
Whitefield Limited *	-1.7%	0.7%	-3.3%	2.2%	-	-	-
WAM Research Limited*	24.1%	7.9%	1.2%	1.7%	-	-	-
<i>S&P/ASX All Ordinaries Accumulation Index</i>	12.2%	-0.2%	2.6%	8.4%	7.4%	9.3%	9.8%
<i>S&P/ASX 50 Leaders Accumulation Index</i>	11.2%	1.1%	3.2%	8.5%	6.8%	9.7%	9.9%

International Equity Portfolios

	1 Year	3 Years pa	5 Years pa	7 Years pa	10 Years pa	15 Years pa	20 Years pa
AMP Capital China Growth Fund *	5.1%	0.0%	-	-	-	-	-
Global Mining Investments Limited	5.1%	-15.4%	-1.0%	6.5%	-	-	-
Platinum Capital Limited	-12.6%	5.4%	-5.7%	-2.4%	2.1%	8.5%	-
Templeton Global Growth	3.7%	-5.4%	-10.4%	-2.9%	-5.6%	1.7%	4.5%
<i>MSCI World Accumulation Index</i>	3.2%	-2.7%	-4.6%	-0.5%	-3.1%	3.6%	5.7%

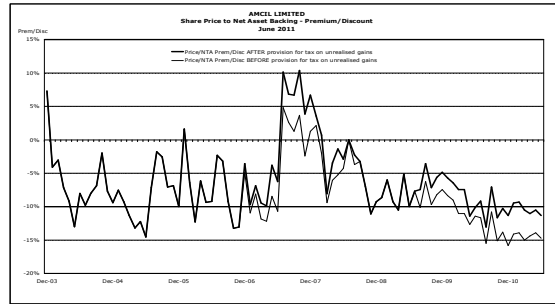
Source: Company Data, IRESS *Not covered by JBWere Research

The following charts depict graphically the historical premium and discounts to NTA that the LICs under our research coverage have traded at over time.

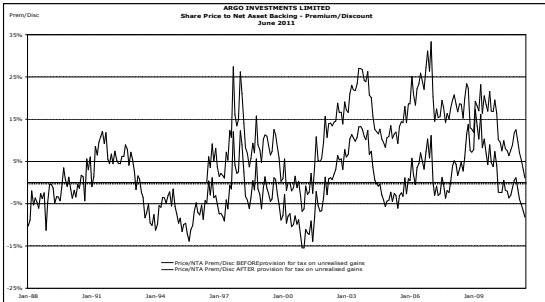
Australian Foundation Investment Company Ltd (AFI)



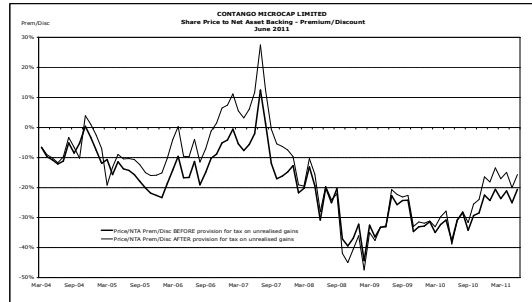
AMCIL Ltd (AMH)



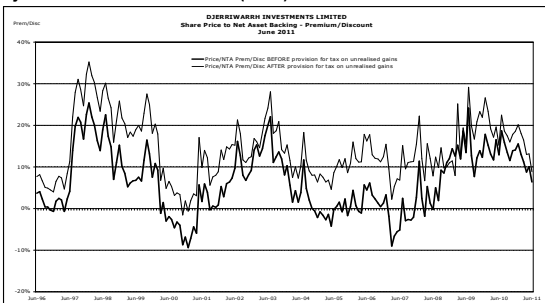
Argo Investments Ltd (ARG)



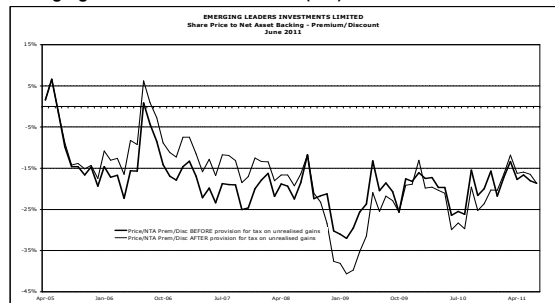
Contango Microcap Ltd (CTN)



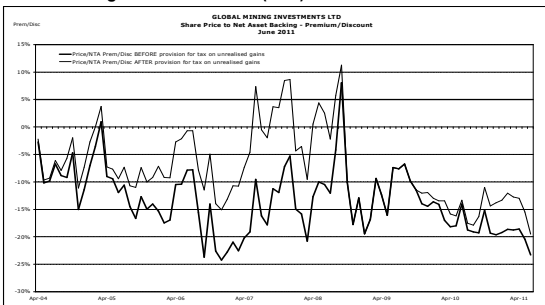
Djerriwarrh Investments Ltd (DJW)



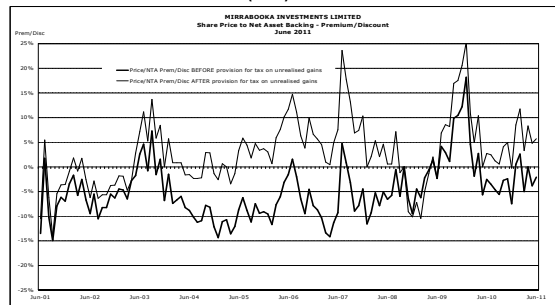
Emerging Leaders Investments Ltd (ELI)



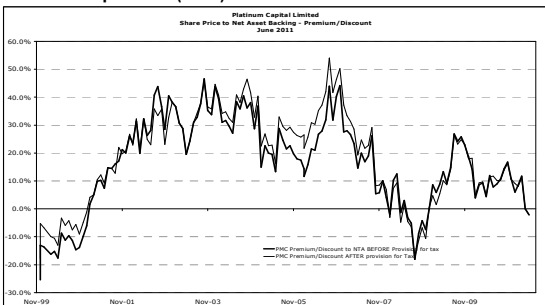
Global Mining Investments Ltd (GMI)



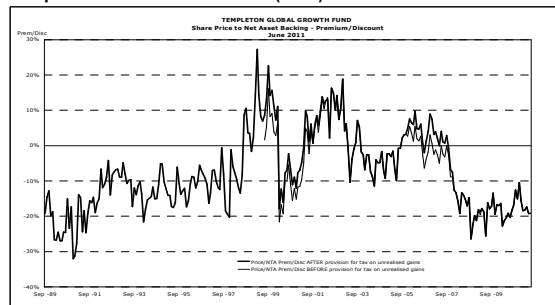
Mirrabeeka Investments Ltd (MIR)



Platinum Capital Ltd (PMC)



Templeton Global Growth Fund (TGG)



Source: Manager Data, IRESS

Australia - Research Important Notice**Ownership and Material Conflicts of Interest**

JBWere policy prohibits its research personnel and their respective associates owning listed securities which are the subject of their research.

Research personnel compensation

Research personnel are paid in part based on the profitability of JBWere. This report has been prepared by the JBWere Investment Strategy Group for distribution to clients of JBWere and potentially to clients of other financial advisers. This research is for clients only, as stated above and is based on current public information that we consider reliable, but we do not represent it is accurate or complete, and it should not be relied on as such. We seek to update our research as appropriate, but various regulations may prevent us from doing so. Other than some industry reports published on a periodic basis, the large majority of reports are published at irregular intervals as appropriate in the analyst's judgment.

General Disclosures

Our advisers and other professionals may provide oral or written market commentary or trading strategies to our clients and our proprietary trading desks that reflect opinions that are contrary to the opinions expressed in this research. They may make investment decisions that are inconsistent with the recommendations or views expressed in this research.

We and our officers, directors, and employees, excluding research personnel, may from time to time have long or short positions in, act as principal in, and buy or sell, the securities or derivatives (including options and warrants) thereof of covered companies referred to in this research.

This research is not an offer to sell or the solicitation of an offer to buy any security in any jurisdiction where such an offer or solicitation would be illegal. It does not constitute a personal recommendation or take into account the particular investment objectives, financial situations, or needs of individual clients. Clients should consider whether any advice or recommendation in this research is suitable for their particular circumstances and, if appropriate, seek professional advice, including tax advice. The price and value of the investments referred to in this research and the income from them may fluctuate. Past performance is not a guide to future performance, future returns are not guaranteed, and a loss of original capital may occur. Certain transactions, including those involving futures, options, and other derivatives, give rise to substantial risk and are not suitable for all investors.

In producing research reports, members of JBWere's Strategy Research may attend site visits and other meetings hosted by the issuers the subject of its research reports. In some instances the costs of such site visits or meetings may be met in part or in whole by the issuers concerned if JBWere considers it is appropriate and reasonable in the specific circumstances relating to the site visit or meeting.

Our research is disseminated primarily electronically, and, in some cases, in printed form. Electronic research is simultaneously available to all clients.

Australia - Research Recommendation Definitions

Sell (S)	Stock is expected to underperform the S&P/ASX 200 for 12 months
Hold (H)	Stock is expected to perform in line with the S&P/ASX 200 for 12 months
Buy (B)	Stock is expected to outperform the S&P/ASX 200 for 12 months

Other Definitions

CS	Coverage Suspended. JBW has suspended coverage of this company.
NC	Not Covered. JBW does not cover this company.

No part of this material may be (i) copied, photocopied or duplicated in any form by any means or (ii) redistributed without the prior written consent of JBWere.

Copyright 2011 JBWere Pty Ltd ABN 68 137 978 360 AFSL 341162